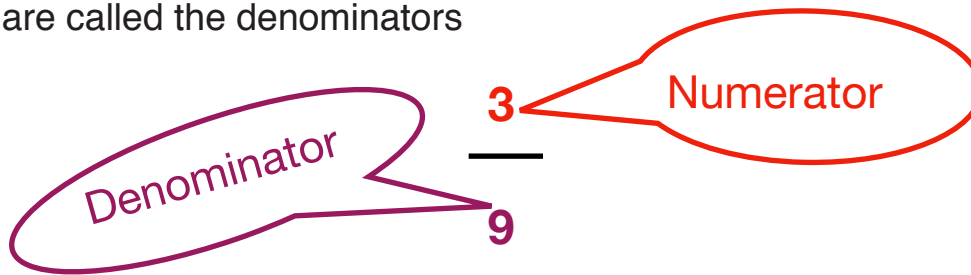


L.I. To add and subtract fractions with the same denominator

Adding and subtracting fractions

It's easy to add and subtract fractions when the numbers on the bottom are the same.

These are called the denominators



Adding with common denominator

$$\frac{1}{4} + \frac{2}{4} = \frac{3}{4}$$

Subtracting with common denominator

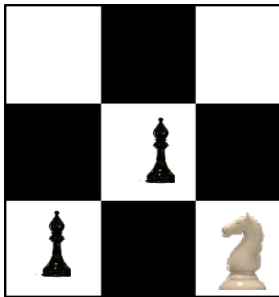
$$\frac{2}{4} - \frac{1}{4} = \frac{1}{4}$$

Useful Video: <https://www.bbc.co.uk/bitesize/topics/zhdwxnb/articles/z9n4k7h>

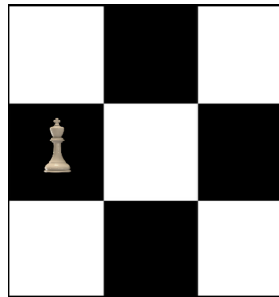


The object of chess is to capture the king. That, at the simplest level, is the symbolic significance of Prospero revealing Ferdinand and Miranda playing chess in the final scene. Prospero has caught the king—Alonso—and reprimanded him for his treachery.

For each section of chess board you need to find the fraction (number of pieces over total number of squares and then add or subtract.

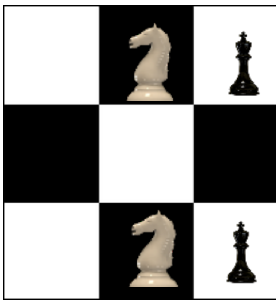


+

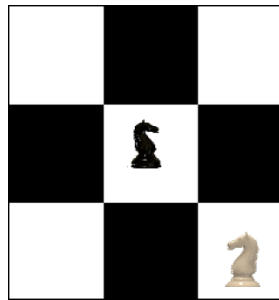


=

$$\frac{3}{9} + \frac{1}{9} = \frac{4}{9}$$

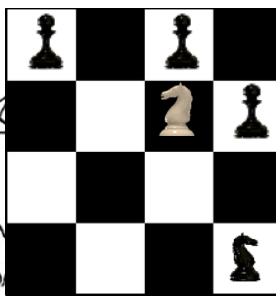


+

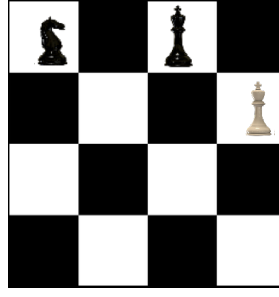


=

$$\frac{4}{9} + \frac{2}{9} = \frac{6}{9}$$

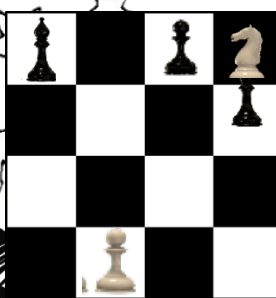


+

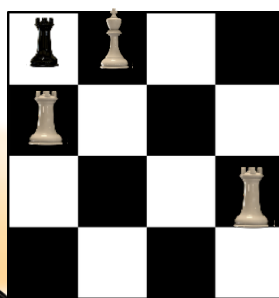


=

$$\frac{5}{9} + \frac{2}{9} = \frac{7}{9}$$

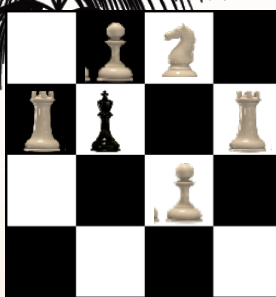


+

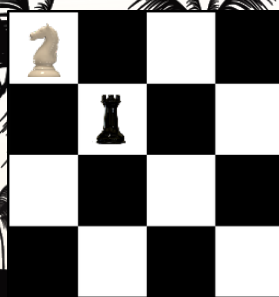


=

$$\frac{4}{9} + \frac{4}{9} = \frac{8}{9}$$



+

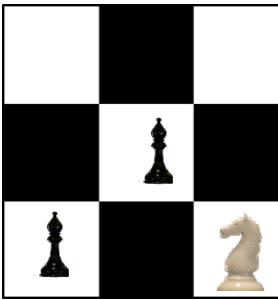


=

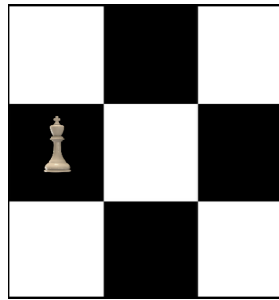
$$\frac{5}{9} + \frac{1}{9} = \frac{6}{9}$$

L.I.To add and subtract fractions with the same denominator

For each section of chess board you need to find the fraction (number of pieces over total number of squares and then add or subtract.

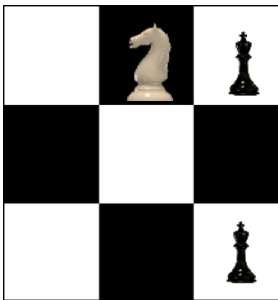


—

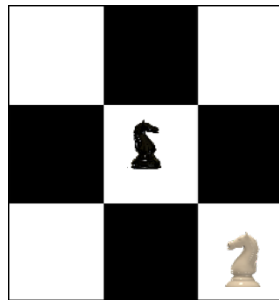


=

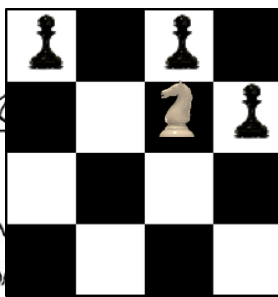
$$\frac{3}{9} - \frac{1}{9} = \frac{2}{9}$$



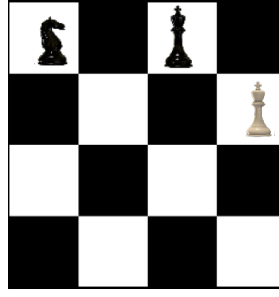
—



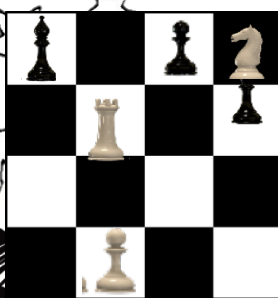
=



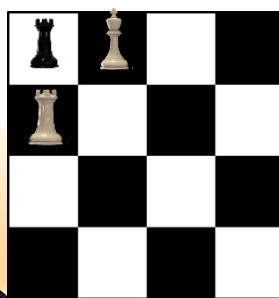
—



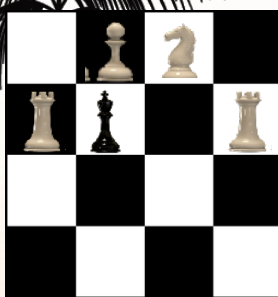
=



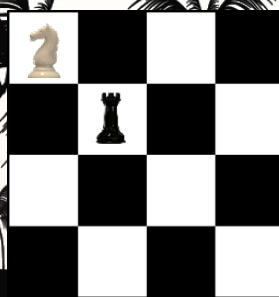
—



=



—



=